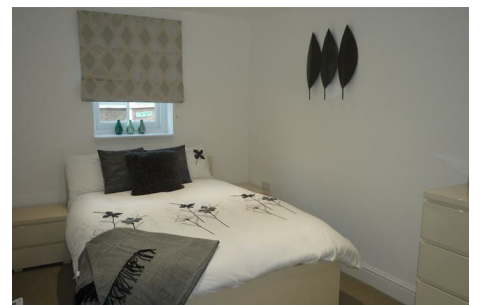


All together better residential property rental



Flat 19 Burberry Court, Ely, Cambridgeshire, CB6 1GZ

This beautifully presented one-bedroom ground floor apartment offers modern living with a high-quality finish throughout.

The property features a bright and spacious open-plan living and kitchen area, with direct access to a private courtyard garden. A generous double bedroom is complemented by a contemporary en-suite shower room.

Further benefits include allocated parking and a convenient central location close to local amenities and transport links.

Water is charged via a monthly contribution towards the bulk supply.

Early viewing is highly recommended to fully appreciate everything this charming home has to offer.

Call us today to arrange your viewing.

£900 Per annum

Flat 19 Burberry Court

, Ely, CB6 1GZ



- Prime Location
- One Bedroom Flat
- EPC: C
- Private Court Yard
- Parking included

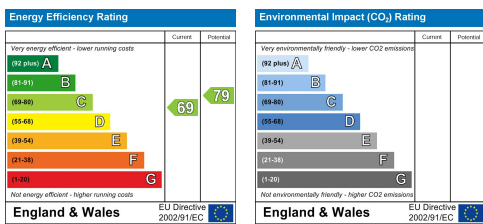


[Directions](#)



Credit References and Deposit

Prospective tenants will be required to complete a credit referencing application payable whether successful or not. Prior to taking occupation of the property you will be required to pay a deposit of 1½ times the monthly rent, the first months rent in advance and an administration fee.



These particulars, whilst believed to be accurate are set out as a general outline only for guidance and do not constitute any part of an offer or contract. Intending purchasers should not rely on them as statements of representation of fact, but must satisfy themselves by inspection or otherwise as to their accuracy. No person in this firm's employment has the authority to make or give any representation or warranty in respect of the property.

The Grange Market Street, Swavesey, Cambridgeshire, CB24 4QG
 Tel: 01223 664200 Email: enquiries@openarch.co.uk www.openarch.co.uk